



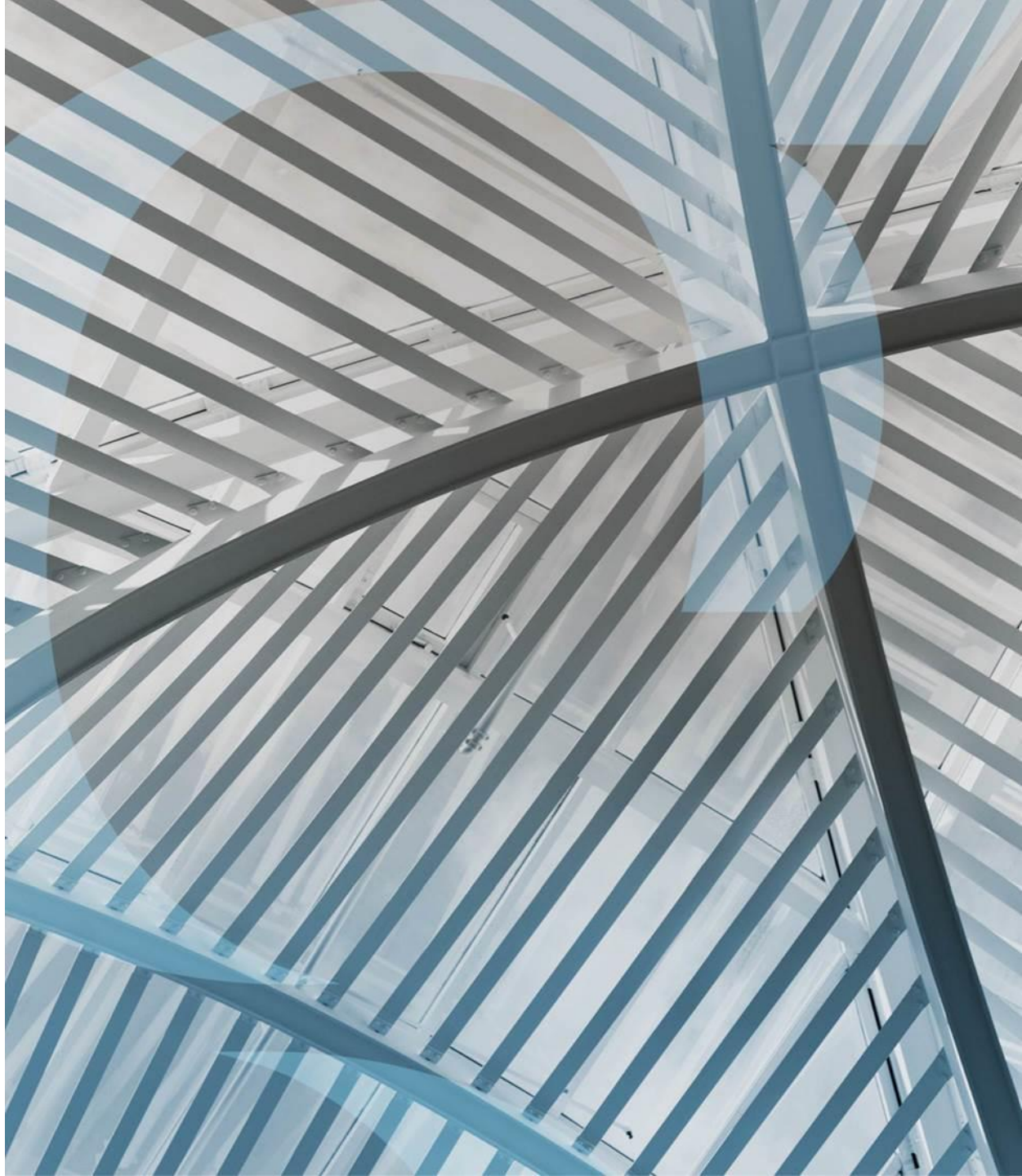
**CONCENTURE**  
WEALTH MANAGEMENT

# Chart Book

AS OF FEBRUARY 28, 2023

---

Securities offered through Sanctuary Securities, member FINRA and SIPC. Advisory services offered through Sanctuary Advisors, LLC, an SEC registered investment advisor.





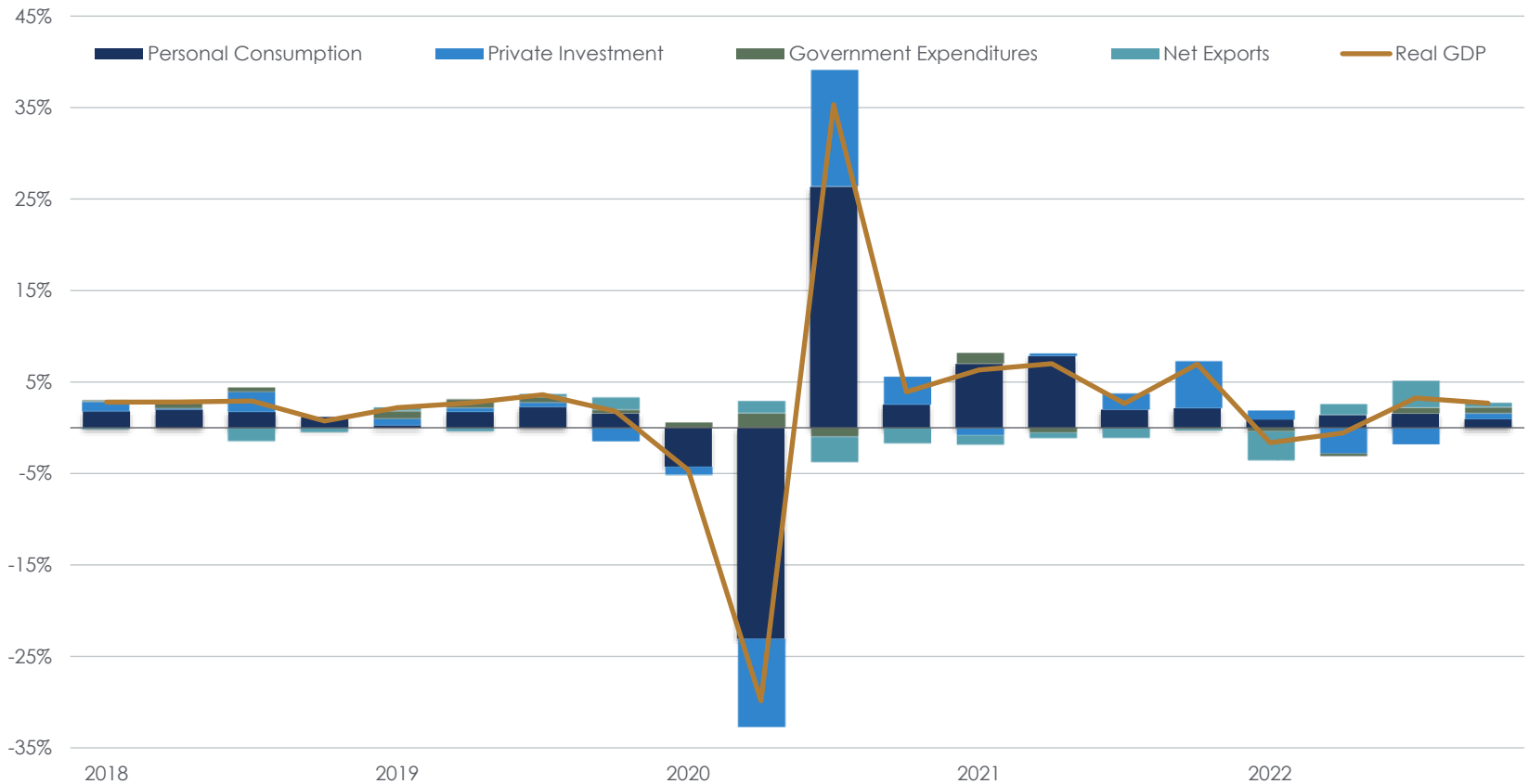
Economic  
Perspective

---

The U.S. economy expanded at a 2.7% annual rate from October through December, a solid showing despite rising interest rates and elevated inflation. The government had previously estimated that the economy grew at a 2.9% annual rate last quarter. The report revised down the government's estimate of consumer spending growth in the October-December quarter, from a 2.1% rate to 1.4%. That was the weakest such showing since the first quarter of last year. Business spending also slowed in the fourth quarter, suggesting that the economy lost momentum at the end of 2022.

# Economic Growth

Contributions to Percent Change in Real GDP (Annualized Q/Q % Change)

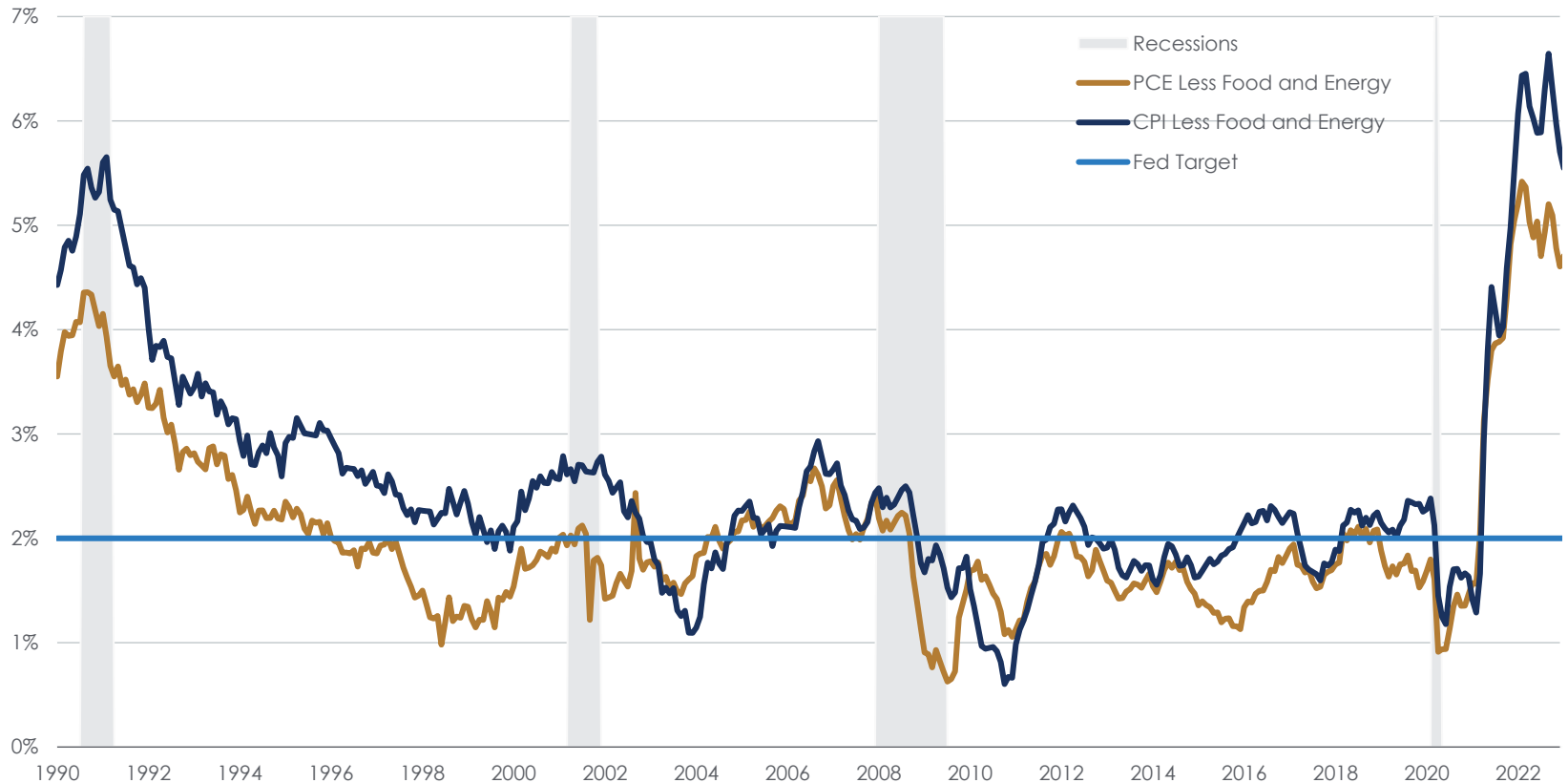


Source: U.S. Bureau of Economic Analysis (Reported quarterly)

The pace of consumer price increases eased again in January compared with a year earlier, the latest sign that inflation is slowly easing. At the same time, the report showed that inflationary pressures in the U.S. economy remain stubborn and are likely to keep prices elevated well into this year. Rising costs will also keep pressure on the Federal Reserve to raise its benchmark interest rate further and to keep it there through year's end.

# Inflation Outlook

Consumer Price Index (Core) and Personal Consumption Expenditures Price Index (Core) (Y/Y % Change)

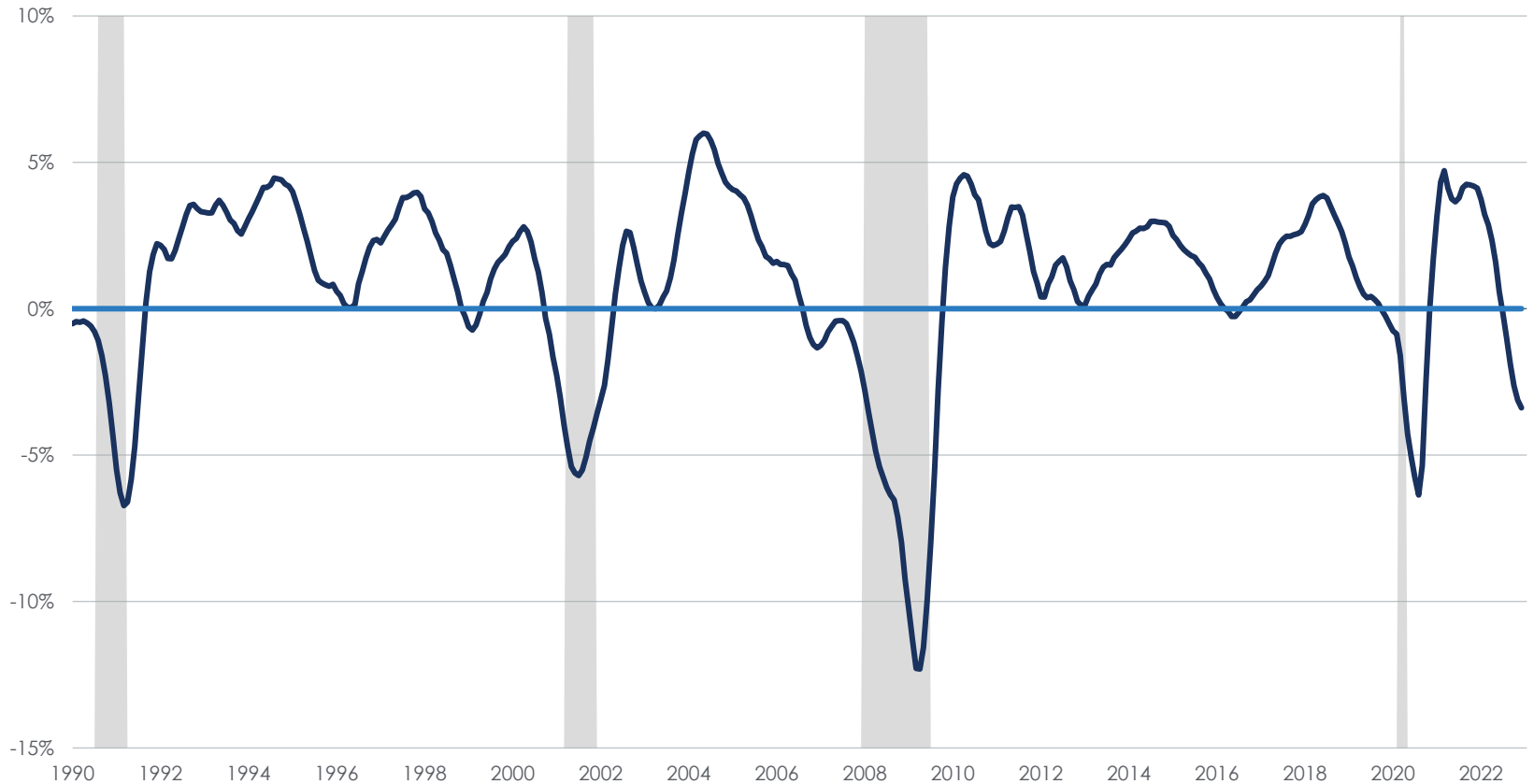


Source: U.S. Bureau of Labor Statistics, U.S. Bureau of Economic Analysis (Reported monthly)

According to the Conference Board, the U.S. LEI remained on a downward trajectory, but its rate of decline moderated slightly in January. Among the leading indicators, deteriorating manufacturing new orders, consumers' expectations of business conditions, and credit conditions more than offset strengths in labor markets and stock prices to drive the index lower. While the LEI continues to signal a recession in the near term, indicators related to the labor market remain robust.

# U.S. Economic Outlook

Leading Economic Index (Six-Month Moving Average of the Six-Month Rate of Change)

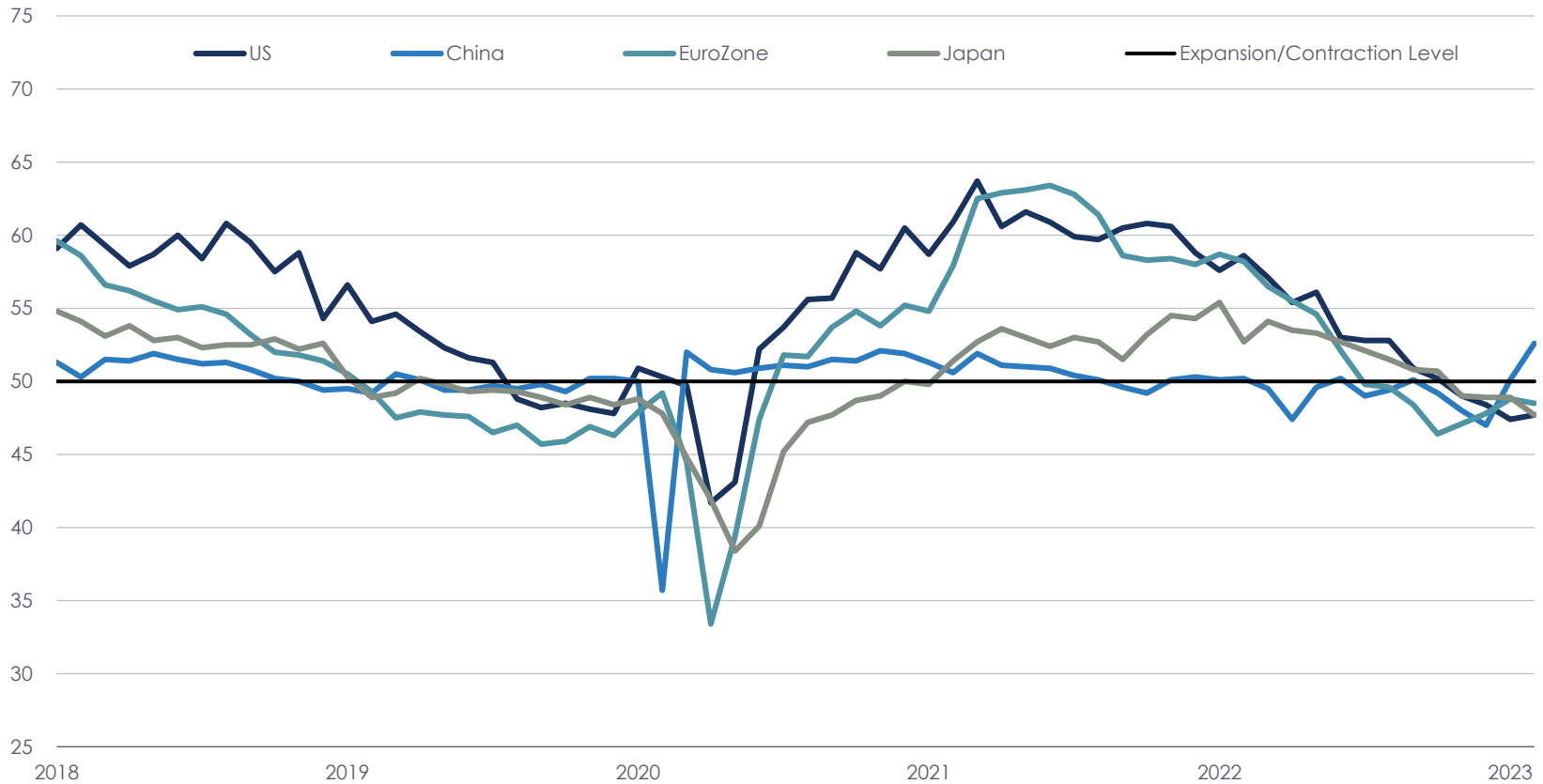


Source: Conference Board (Reported monthly)

The February PMIs provide a signal that the global expansion gathered steam. This uplift is filtering through to the labor market and business confidence. Companies reported that reduced recession risks, a peaking of cost pressures, improving supply chains and a reopening of the Chinese economy had all boosted demand in February.

# Global Economic Outlook

Manufacturing Purchasing Managers Index (PMI) (A PMI over 50 represents growth in manufacturing)



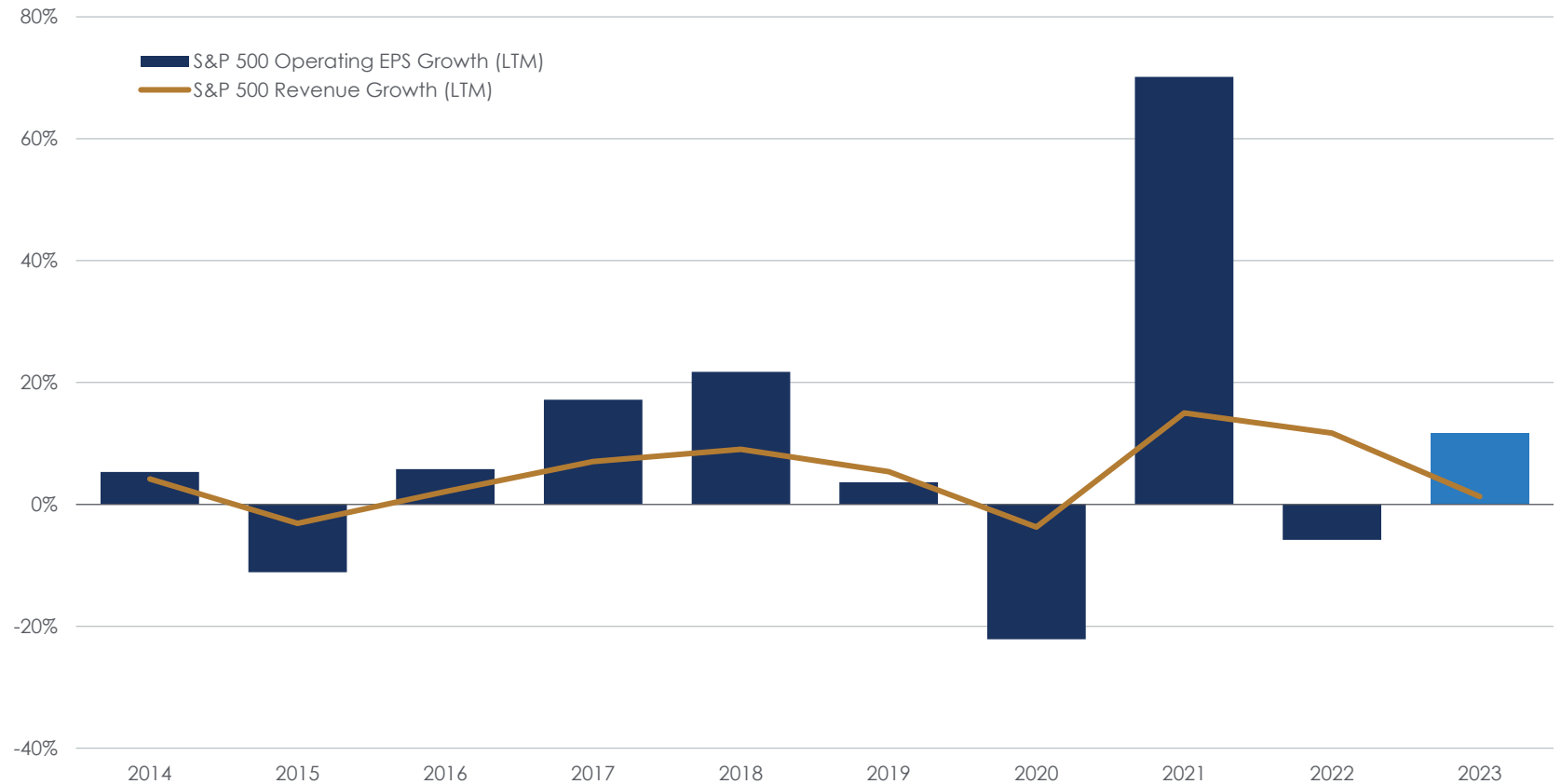
Source: ISM, Markit



According to FactSet, the bottom-up target price target for the S&P 500 over the next 12 months is 4630. At the sector level, the Communication Services (+27.6%) sector is expected to see the largest price increase. On the other hand, the Materials (+8.2%) and Industrials (+8.4%) sectors are expected to see the smallest price increases.

# Corporate Profitability

S&P 500 Operating Earnings Per Share and Revenue Per Share Growth (Y/Y % Change)

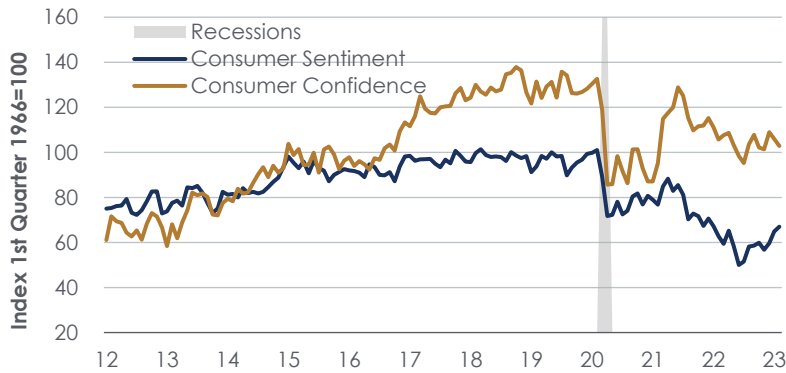


Source: S&P Dow Jones Indices (Reported monthly)

According to the Conference Board, consumer confidence declined again in February. The decrease reflected large drops in confidence for households aged 35 to 54 and for households earning \$35,000 or more. Expectations for where jobs, incomes, and business conditions are headed over the next six months all fell sharply in February. While 12-month inflation expectations improved, consumers may be showing early signs of pulling back spending in the face of high prices and rising interest rates.

# Consumer Outlook

Consumer Sentiment & Confidence Indexes



Personal Saving Rate (Seasonally Adjusted Annual Rate)



Disposable Personal Income (Y/Y % Change)



Personal Consumption Expenditures (Y/Y % Change)



Source: Thomson Reuters/University of Michigan, Conference Board, U.S. Bureau of Economic Analysis (Reported monthly)





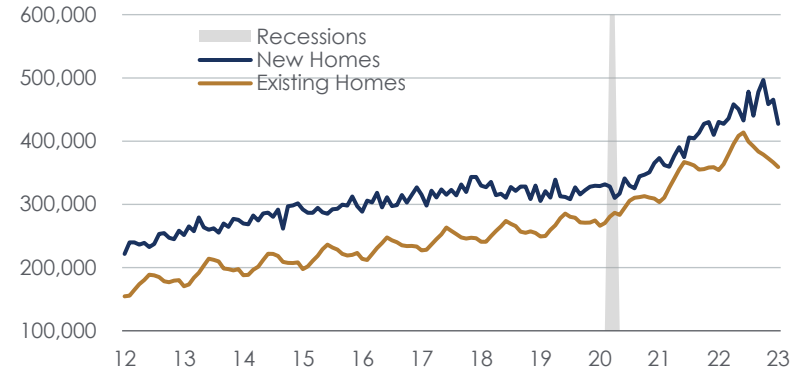
According to Redfin, U.S. home-sale prices have fallen from a year earlier for the first time in more than a decade. The milestone comes as higher mortgage rates sideline buyers and sellers are forced to lower their asking price to accommodate high rates. The typical U.S. home sold for \$350,246 during the four weeks ending February 26, down 0.6% year over year.

# Housing Market Outlook

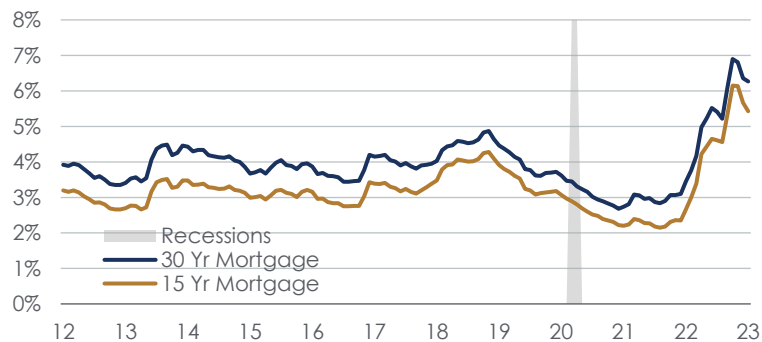
Housing Affordability (higher = more affordable)



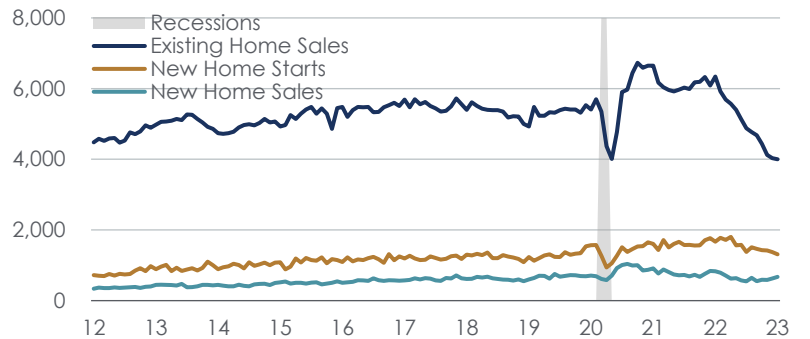
Median Selling Price of New and Existing Homes



Average Fixed Rate Mortgage in the U.S.®



Housing Starts, Existing Home Sales and New Home Sales (000's)



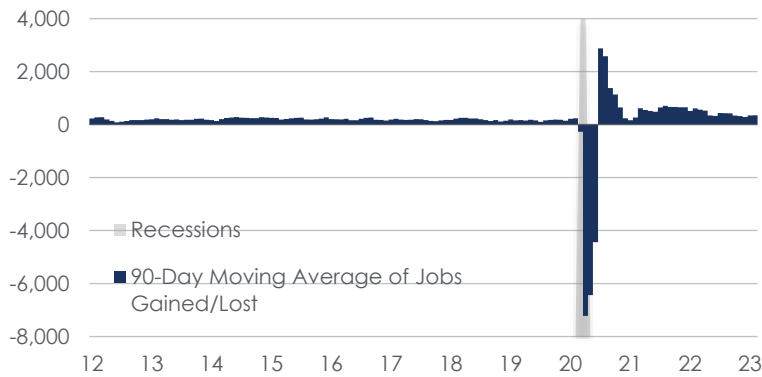
Source: National Association of Realtors, Freddie Mac, U.S. Bureau of the Census (Reported monthly)



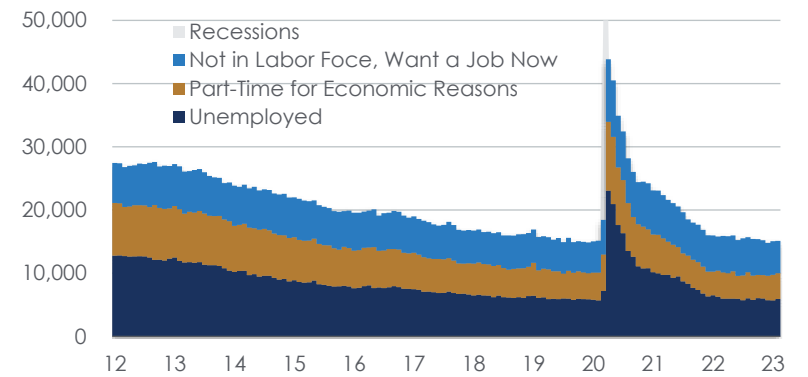
The U.S. economy added 311,000 jobs in February. However, monthly wage growth slowed down and the unemployment rate rose, pointing to labor market loosening and prompting financial markets to dial back expectations that the Federal Reserve will raise interest rates by half a percentage point this month. Some economists viewed the mixed report as raising the chances that the economy would avoid a recession this year, and instead only experience slower growth.

# Labor Market Outlook

Jobs Gained/Lost (000's) with 12-Month Moving Average



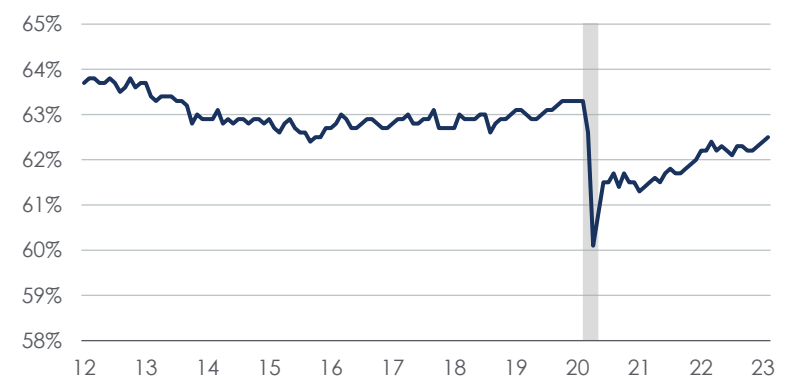
Labor Market Slack (000's)



Wage Growth (Y/Y % Change)



Labor Force Participation Rate



Source: U.S. Bureau of Labor Statistics, (Reported monthly, Wage Growth reported quarterly)





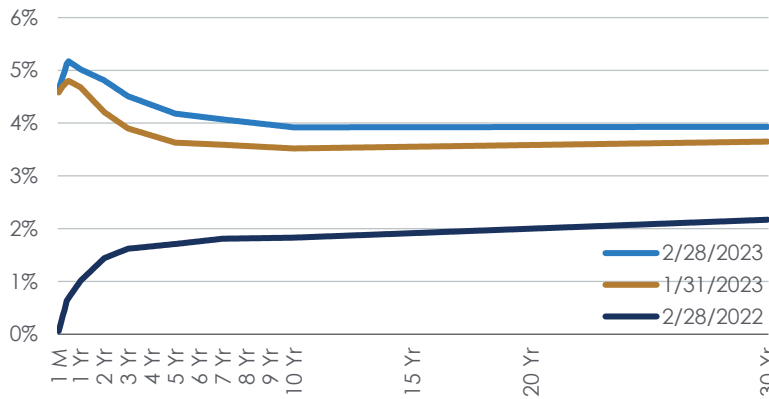
## Bond Market Perspective

---

Bonds sold off as evidence of continued labor market tightness and some disappointing inflation releases raised the odds of further U.S. Federal Reserve tightening. The 10-year U.S. Treasury yield closed the month at 3.9%, up 41 basis points from the January month end. The yield on the 10-year Treasury bond has become a pivot point with all other Treasury yields of shorter or longer maturities having higher yields. Longer term yields indicate that investors believe the Fed is nearing the end of its rate hiking cycle and that the economy will slow, bringing inflation down with it.

# U.S. Treasury Market

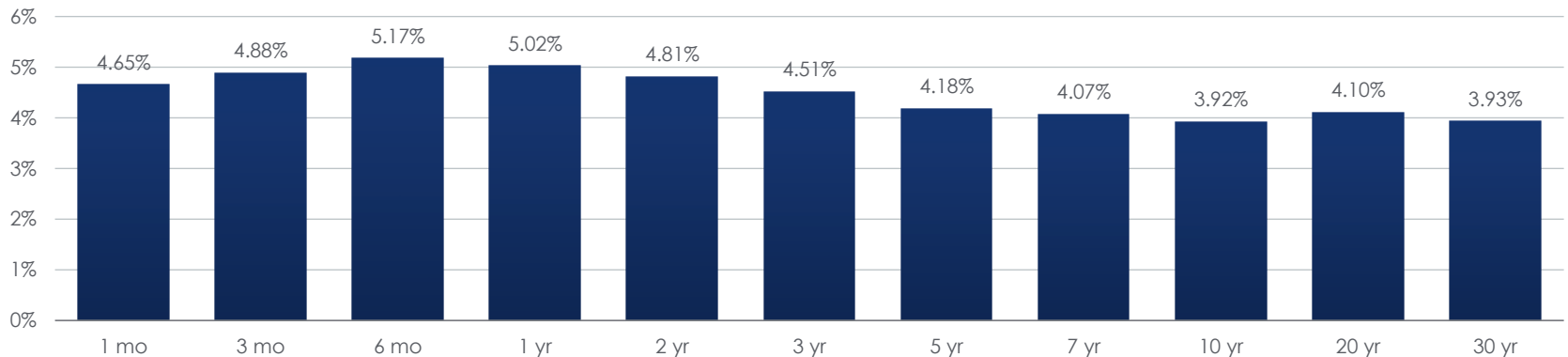
U.S Treasury Yield Curve



Historical U.S. 10-Year Treasury Rate



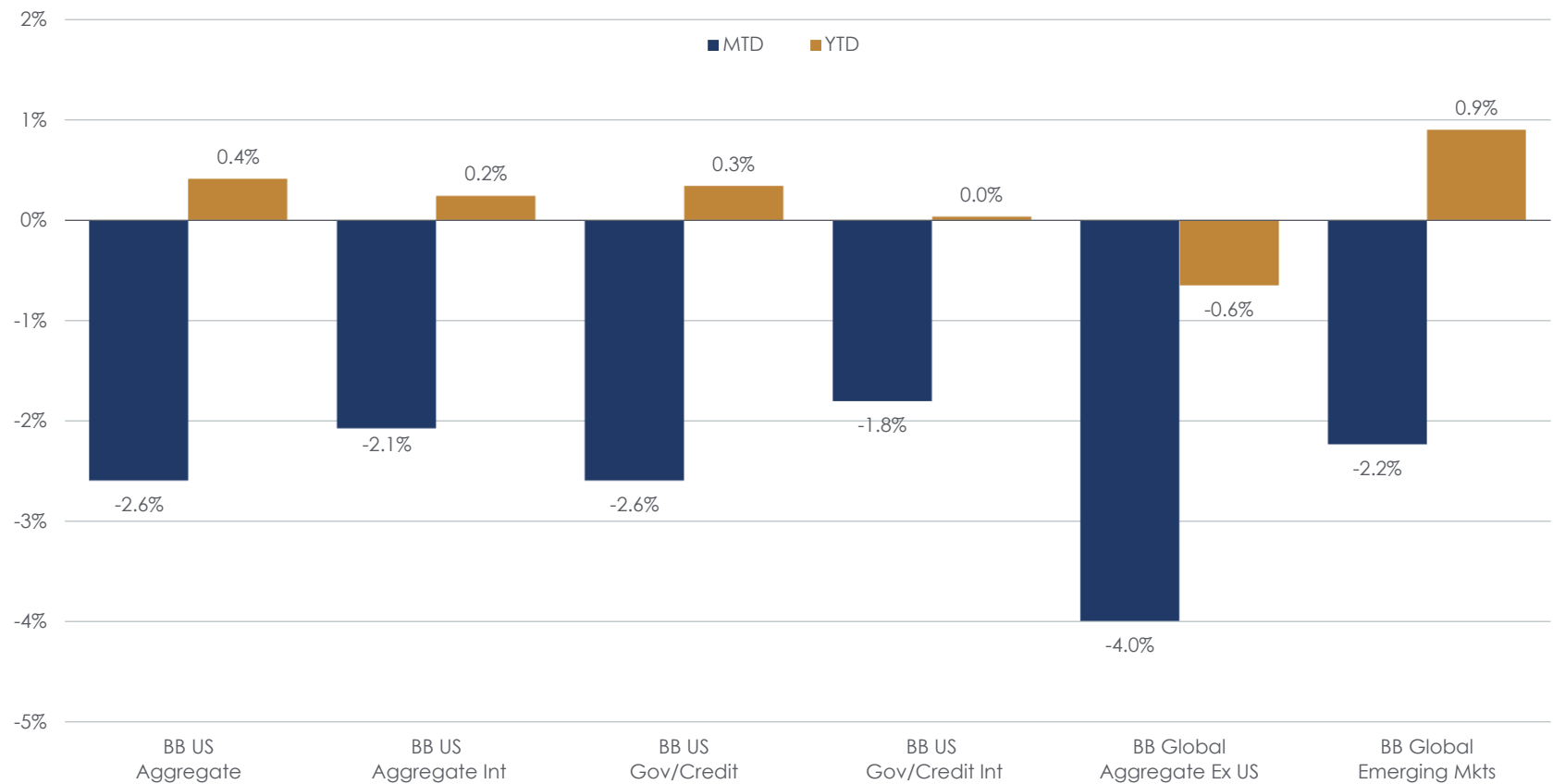
Current U.S. Treasury Yields by Maturity



Source: U.S. Department of Treasury



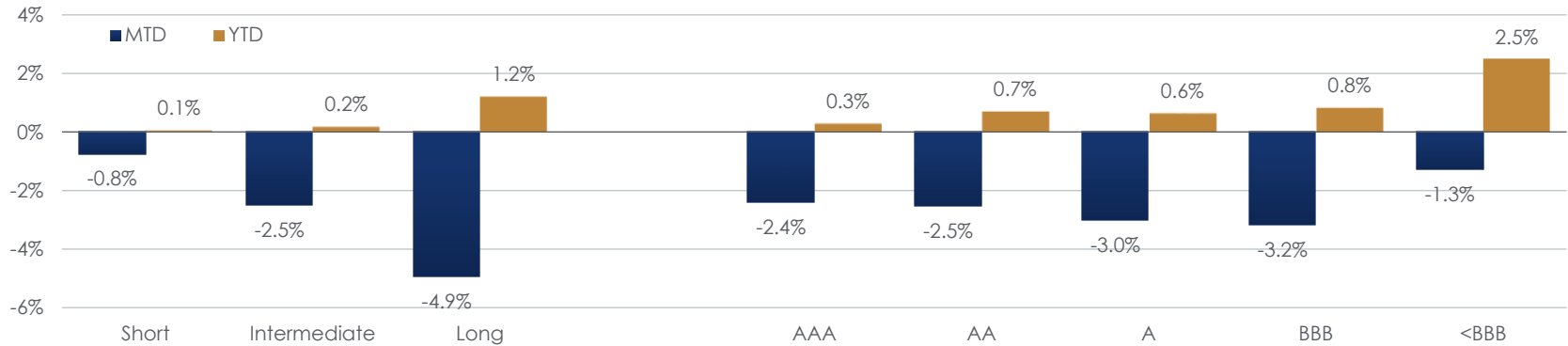
# Global Fixed Income Returns by Bellwether Index



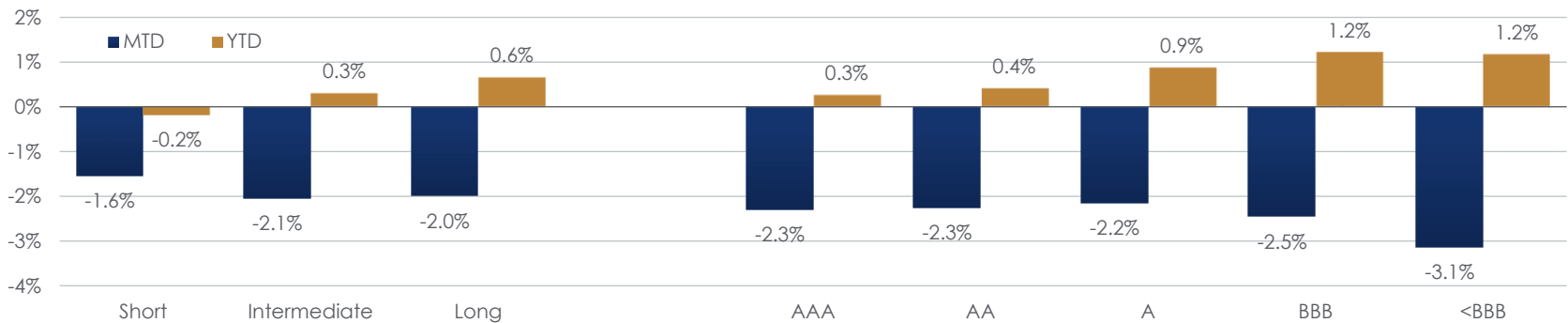
Source: Bloomberg Barclays (BB)

# Domestic Fixed Income Returns by Maturity and Credit Quality

Domestic Bond Market - Taxable



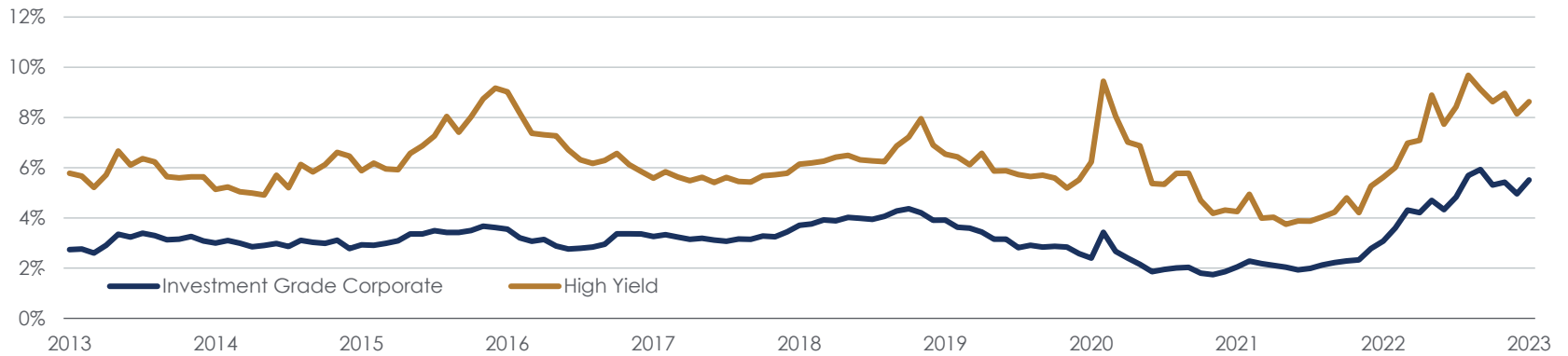
Domestic Bond Market - Municipal



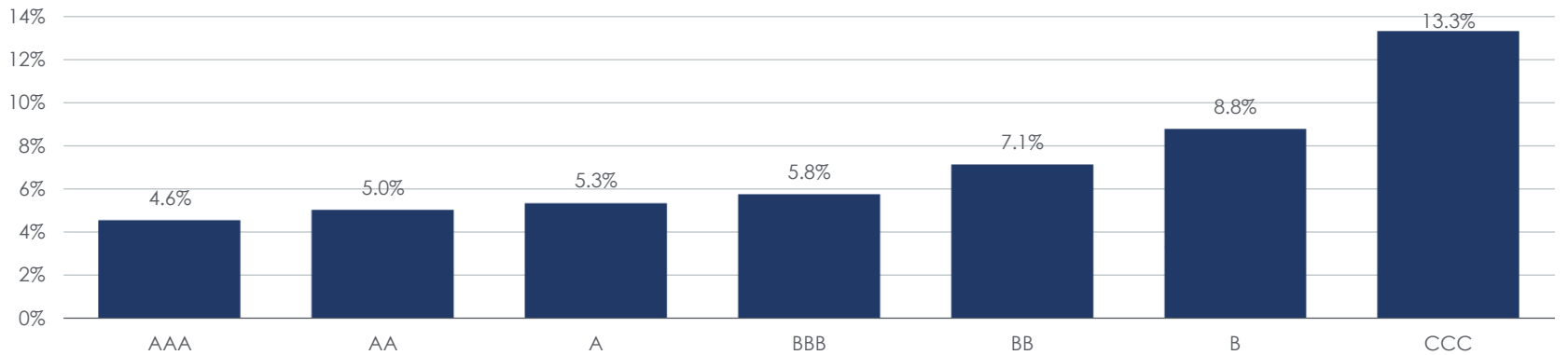
Short is defined as 1-3 years for taxable and 3 years for municipal, Intermediate is 5-7 years for taxable and 6-8 years for municipal, Long is 10+ years for taxable and 8-12 years for municipal. Source: Bloomberg Barclays Aggregate Bond Index (taxable bond market) and Bloomberg Barclays Municipal Index (municipal bond market).

# Domestic Corporate Bond Yields

Historical Corporate Bond Market Yield to Worst



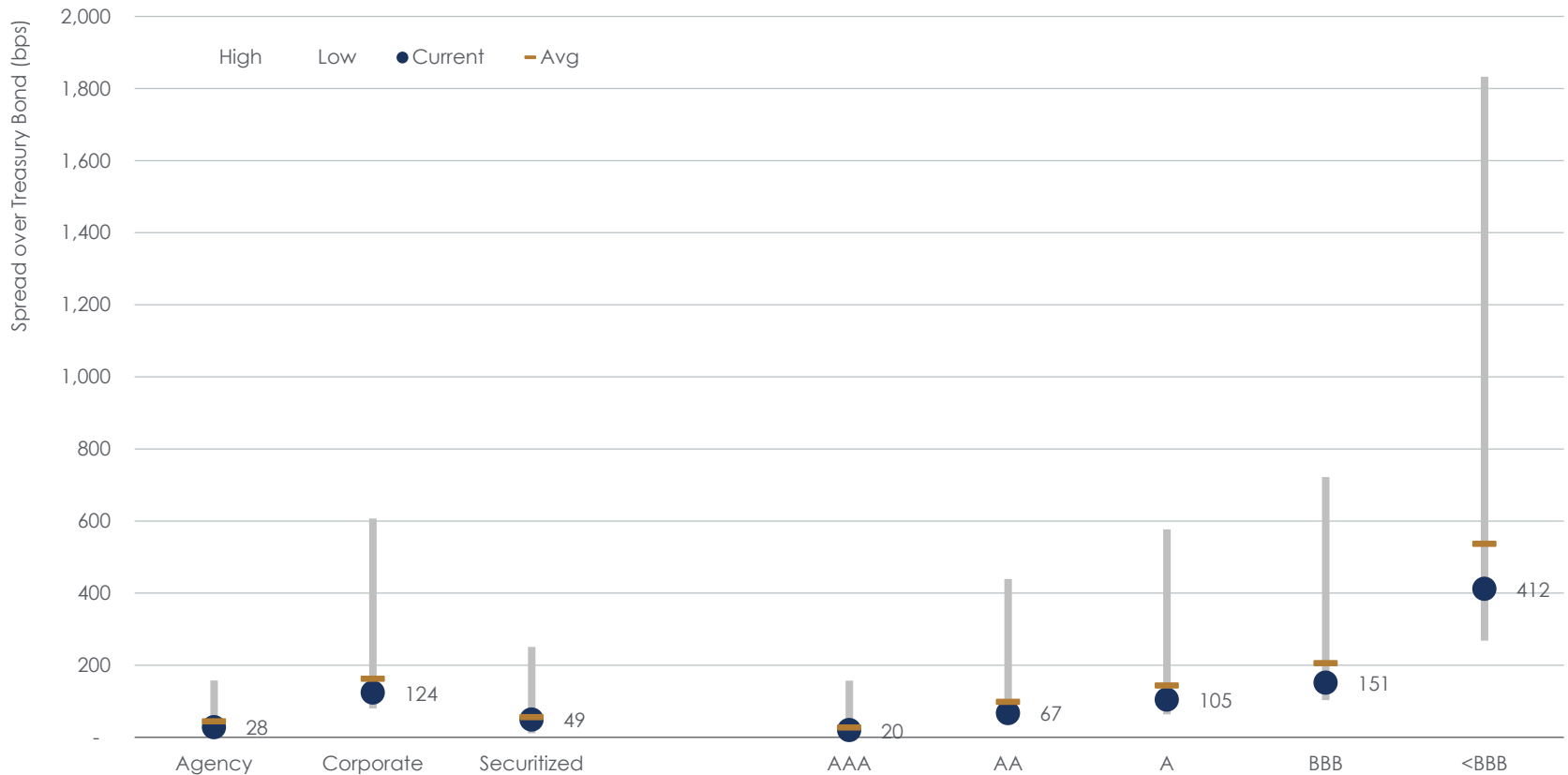
Current Corporate Bond Market Yields by Credit Quality



Investment Grade Corporate bonds are represented by the Bloomberg Barclays U.S. Corporate Investment Grade index. High Yield bonds are represented by the Bloomberg Barclays U.S. Corporate High Yield index. Source: Bloomberg Barclays

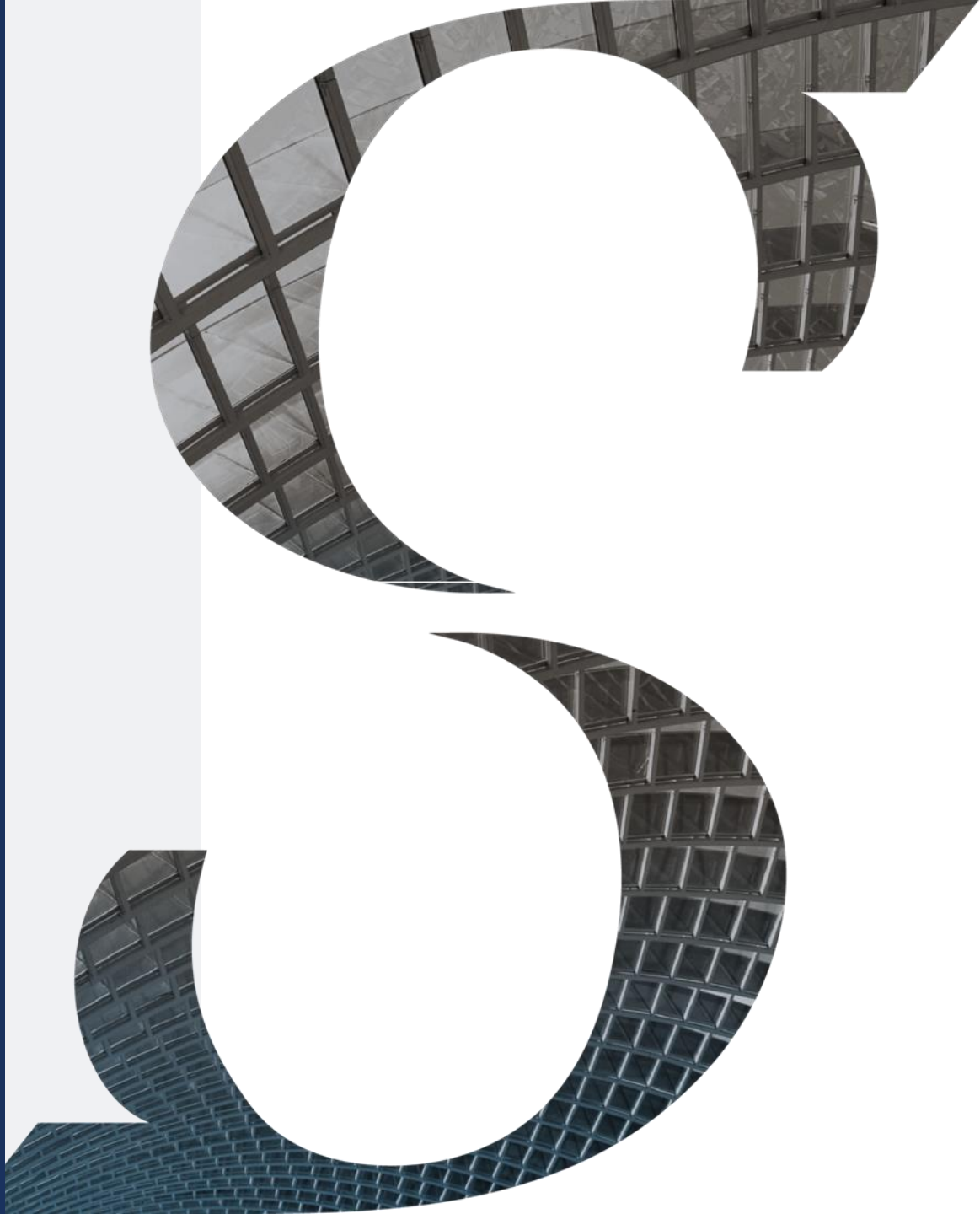
# Domestic Taxable Bond Spreads

Current Bond Spreads Compared to 15-Year Range and 15-Year Average



The length of each bar represents the Range of the highest and lowest spread to the Treasury benchmark over the past 15 years. Average represents the average spread over the past 15 years. Current represents the most recent month. Source: Bloomberg Barclays





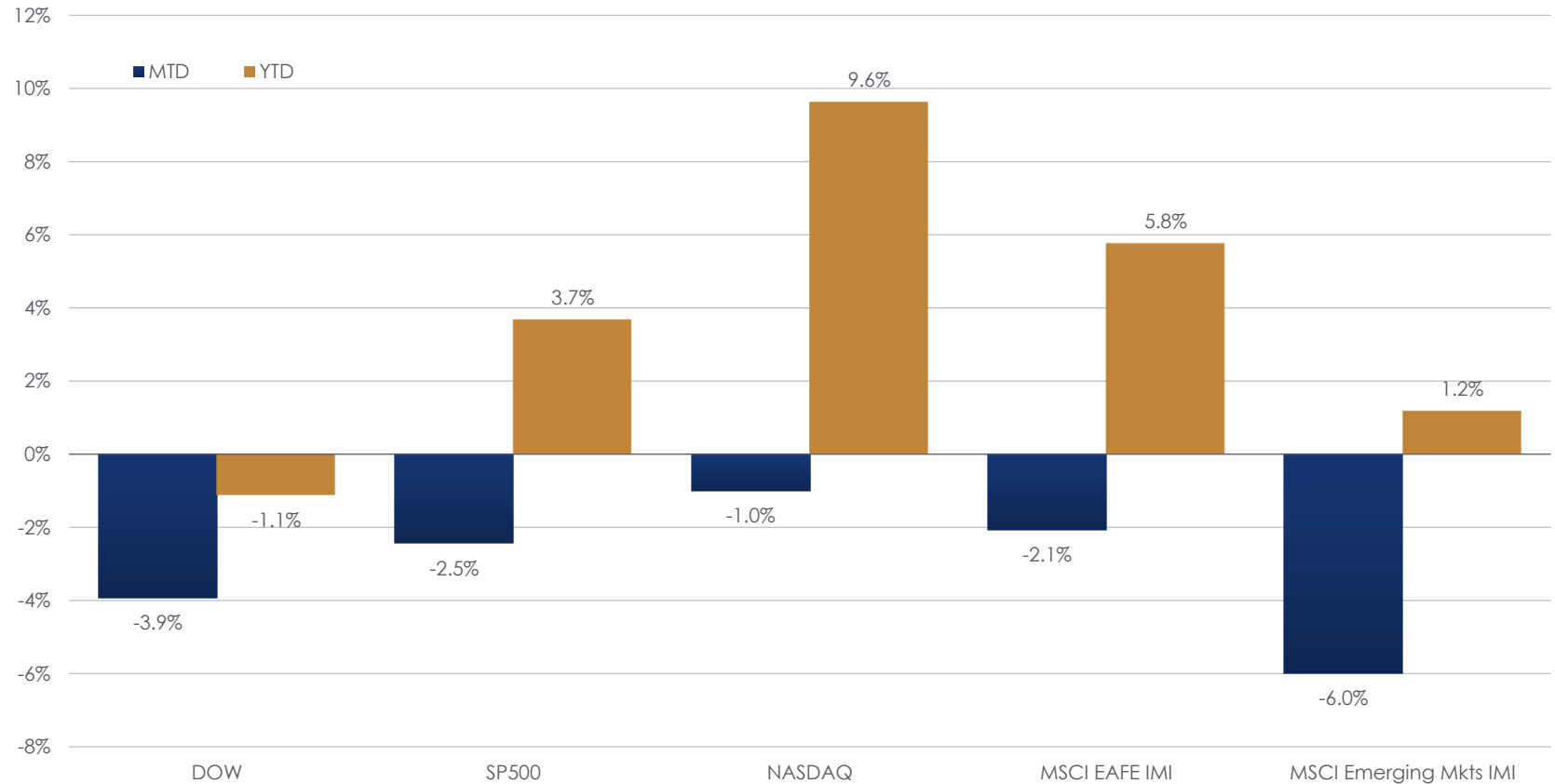
## Equity Market Perspective

---

February was a month of mixed fortunes for global equity markets. In a reversal of trend, emerging markets underperformed both of the developed markets. In the U.S., all three major indices were down, though the technology-laden NASDAQ was the most resilient. From a sector perspective, growth stocks pulled back but continued their outperformance over value in February despite rising yields. The information technology sector posted the lone positive return while the energy sector was the laggard.

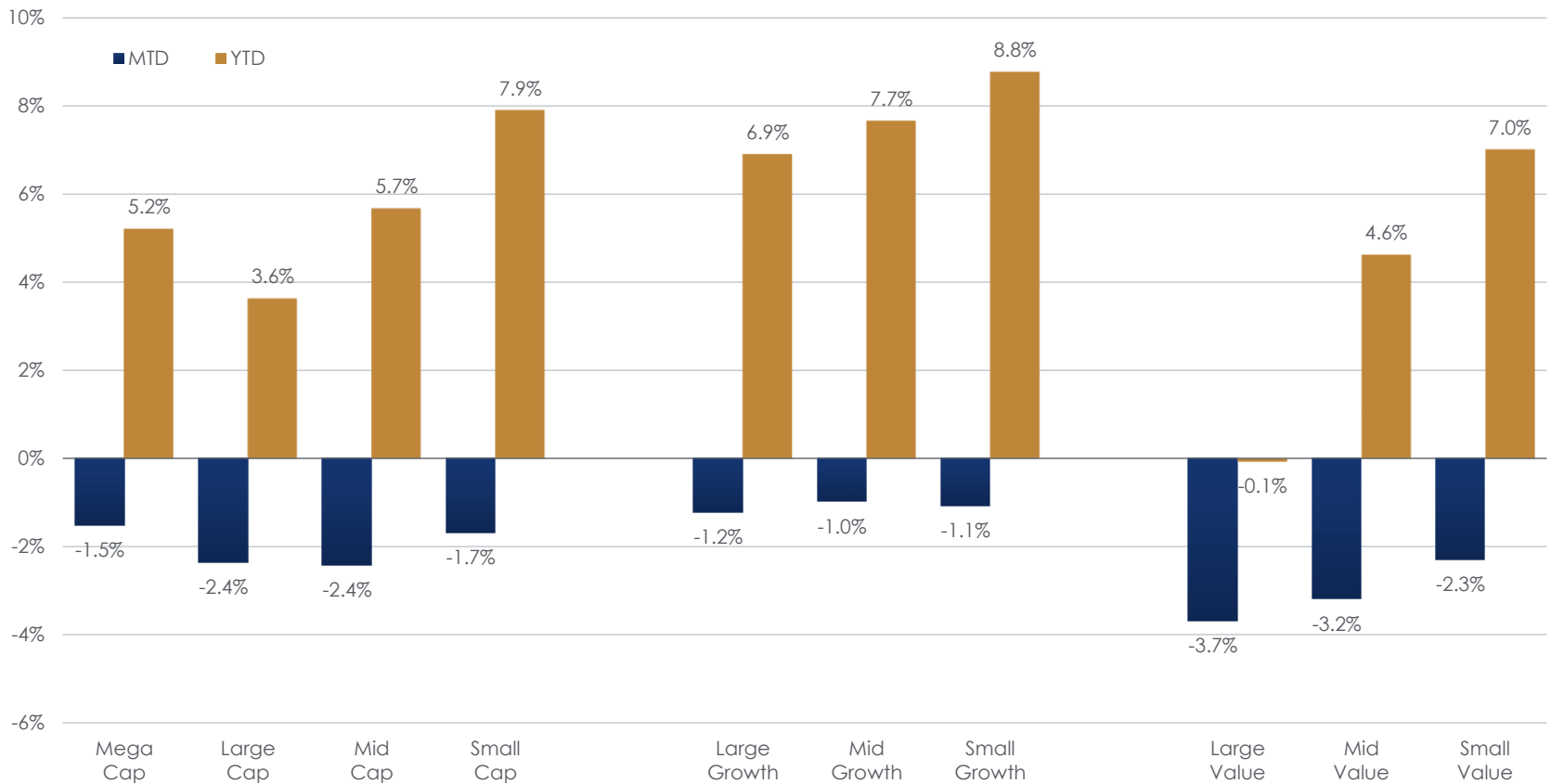
# Global Equity Returns by Bellwether Index

## Global Equity Markets



# Domestic Equity Returns by Market Cap & Style

## Domestic Equity Markets

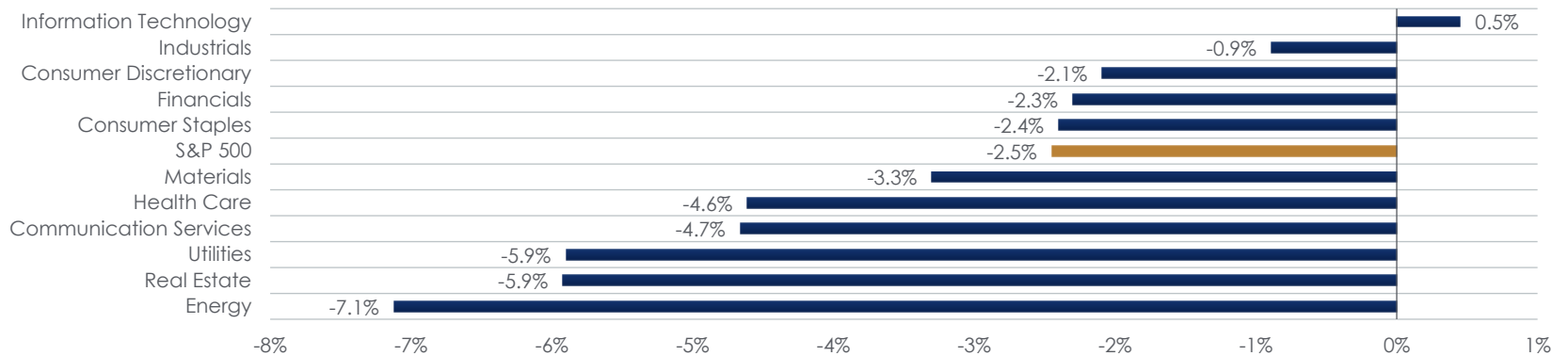


Asset classes are represented by the following benchmarks: Russell Top 50 (Mega), Russell Top 200 (Large), Russell Midcap (Mid), Russell 2000 (Small). Source: Russell

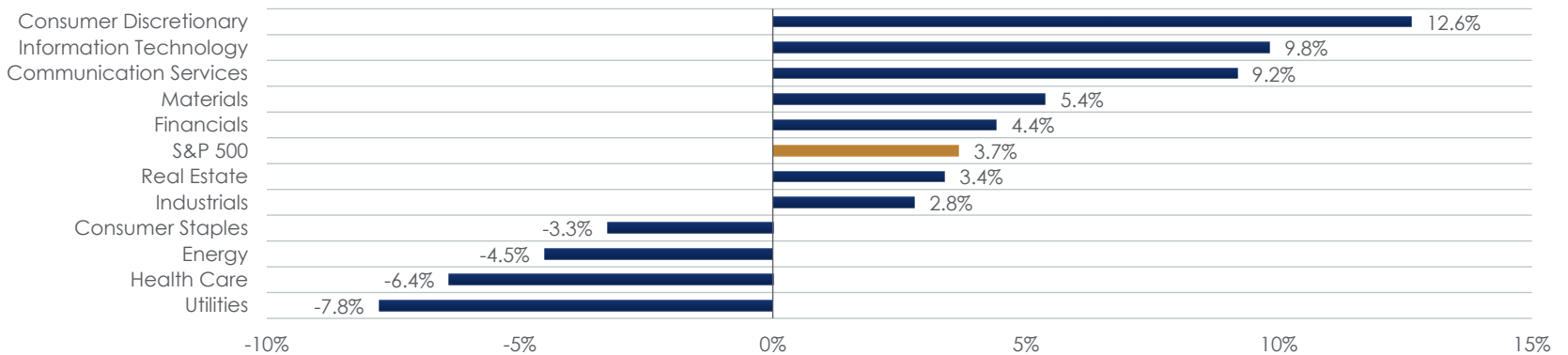


# Domestic Equity Returns by Sector

## MTD S&P 500 Returns by Sector

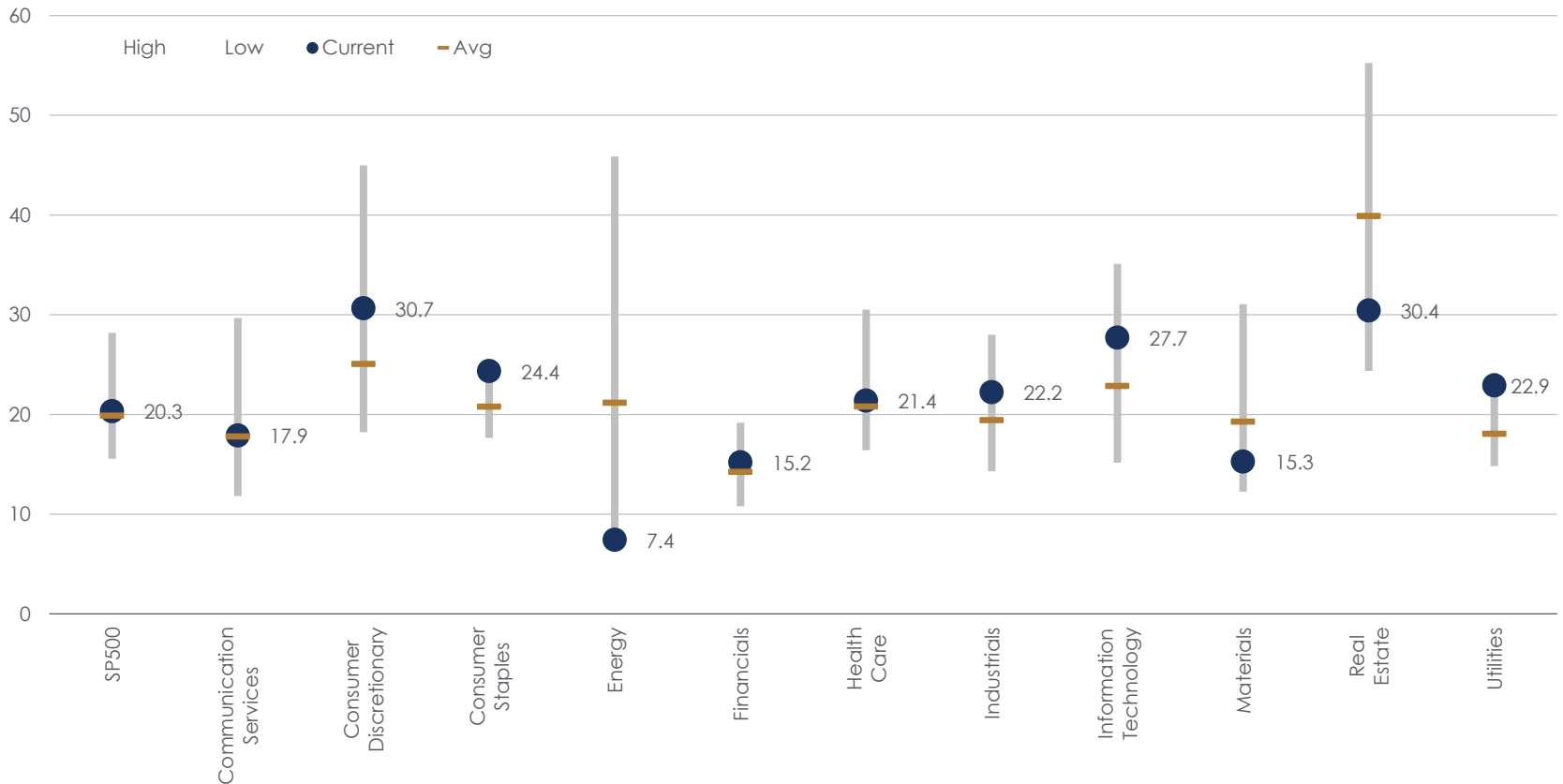


## YTD S&P 500 Returns by Sector



# Domestic Equity Valuations by Sector

Trailing 12 Month P/E Ratio Compared to 10-Year Range and 10-Year Average



P/E ratios are based on trailing 12 months earnings (LTM) excluding negative earnings. The length of each bar represents the Range of the highest and lowest P/E ratio over the past 10 years. Average represents the average P/E ratio over the past 10 years. Current represents the most recent month. Source: Bloomberg

---

# Economic Indicator Descriptions

**Real Gross Domestic Product (GDP):** GDP is a basic measure of U.S. economic output adjusted for inflation. Alternatively, it can be thought of as the final value of all goods and services produced within the U.S. Positive GDP growth signals an expanding economy.

**Consumer Price Index (CPI):** Measuring the change in the CPI provides an estimate for inflation. The CPI tracks the price of a basket of consumer goods and services. High inflation or deflation (negative inflation) can be signs of economic worry. CPI is typically reported in two ways: headline and core CPI. Headline CPI includes all categories that comprise the CPI basket of goods and services.

**Personal Consumption Expenditure Chain-type Price Index (PCEPI):** Measuring the change in the PCEPI provides an estimate for inflation. In comparison to CPI, which uses one set of expenditure weights for several years, this index uses expenditure data from the current period and the preceding period. This price index method assumes that the consumer has substituted from goods whose prices are rising to goods whose prices are stable or falling. Core PCEPI, which is closely monitored by the Fed, strips out the more volatile Food and Energy categories.

**Conference Board Index of Leading Economic Indicators (LEI):** The LEI is designed to signal peaks and troughs in the business cycle. The ten components include: average weekly manufacturing hours; average weekly initial claims for unemployment insurance; manufacturers' new orders for consumer goods and materials; ISM® Index of New Orders; manufacturers' new orders for nondefense capital goods excluding aircraft orders; building permits for new private housing units; stock prices of 500 common stocks; Leading Credit Index™; interest rate spread on 10-year Treasury bonds less federal funds and average consumer expectations for business conditions.

**The Institute for Supply Management (ISM) PMI Index:** The PMI is a composite index of five "sub-indicators", which are extracted through surveys to purchasing managers from around the country. The five sub-indexes are: Production, New orders, Supplier deliveries, Inventories and Employment level. An Index value over 50 indicates expansion; below 50 indicates contraction.

**The Institute for Supply Management (ISM) Non-manufacturing Index (NMI):** The NMI is a composite index of four "sub-indicators", which are extracted through surveys to purchasing managers. The four sub-indexes: Business activity, New orders, Employment, Supplier deliveries. An Index value over 50 indicates expansion; below 50 indicates contraction.

**Consumer Confidence Index (CCI):** The Consumer Confidence Index is a well-known proxy for the attitudes of U.S. consumer towards the business climate, personal finances and spending. This index attempts to measure the confidence that consumers have in the overall economy. This is important because consumer spending accounts for a large portion of U.S. GDP.

**Consumer Sentiment Index (MCSI):** The MCSI uses telephone surveys to gather information on consumer expectations regarding the overall economy. The MCSI is becoming more useful for investors because it gives a monthly snapshot of whether consumers feel like spending money by accessing their views on the business climate, personal finance, and spending in order to judge their level of optimism/pessimism. This is important because consumer spending accounts for a large portion of U.S. GDP.

**Disposable Personal Income per Capita (DPI):** DPI is the amount of money that households have available for spending and saving after income taxes have been accounted for. DPI is monitored to gauge the overall state of the economy.

**Personal Consumption Expenditures (PCE):** PCE consists of the actual and imputed expenditures of households including durables, non-durables and services.

**Retail Sales:** The retail sales report captures in-store sales as well as catalog and other out-of-store sales. The report also breaks down sales figures into groups such as food and beverages, clothing, and autos. The results are often presented two ways: with and without auto sales being counted, because their high sticker price can add extra volatility to the data.

**Housing Affordability Index (HAI):** Published monthly by the National Association of Realtors, the HAI index has a value of 100 when the median-income family has sufficient income to purchase a median-priced existing home. A higher index number indicates that more households can afford to purchase a home.

**Unemployment Rate:** Calculated monthly by the Bureau of Labor Statistics, the unemployment rate is a gauge of the health of the U.S. labor market. High unemployment can stifle the growth of the economy.

**Wage Growth:** Calculated quarterly by the Bureau of Labor Statistics, the employment cost index measures the growth of employee compensation (wages and benefits). The index is based on a survey of employer payrolls in the final month of each quarter. The index tracks movement in the cost of labor, including wages, fringe benefits and bonuses for employees at all levels of a company. We are using the wage component of this index.

---

# Benchmark Descriptions

**U.S. Aggregate Bond:** The Barclays U.S. Aggregate Bond Index measures the performance of USD-denominated, SEC-registered, investment-grade, fixed-rate or step up, taxable bonds. The index includes bonds from the Treasury, Government-Related, Corporate and MBS, ABS, and CMBS sectors. Securities included in the index must have at least one year until final maturity.

**U.S. Treasury:** The Barclays Capital U.S. Treasury Index measures the performance of public obligations of the U.S. Treasury with a remaining maturity of one year or more.

**U.S. Agency:** The Barclays Capital U.S. Agency Bond Index measures the performance of the agency sector of the U.S. government bond market and is comprised of investment-grade USD-denominated debentures issued by government and government-related agencies, including FNMA. The index includes both callable and non-callable securities that are publicly issued by U.S. government agencies, quasi-federal corporations, and corporate and foreign debt guaranteed by the U.S. government.

**U.S. Corporate:** The Barclays Capital U.S. Corporate Bond Index measures the performance of publicly issued USD-denominated corporate and Yankee debentures and secured notes that meet specified maturity, liquidity, and quality requirements.

**U.S. MBS:** The Barclays Capital U.S. Mortgage Backed Securities Index measures the performance of mortgage-backed pass-through securities of Ginnie Mae (GNMA), Fannie Mae (FNMA), and Freddie Mac (FHLMC).

**U.S. Municipal Bond:** The Barclays Capital Municipal Bond Index measures the performance of the USD-denominated, investment grade, fixed-rate tax exempt bond market. The index has four main sectors: state and local general obligation bonds, revenue bonds, insured bonds and pre-refunded bonds. Securities included in the index must have at least one year until final maturity.

**General Obligation Bond Index:** The Barclays General Obligation Bond Index measures the average market-weighted performance of general obligations securities that have been issued in the last five years with maturities greater than one year.

**Revenue Bond Index:** The Barclays Revenue Bond Index measures the average market-weighted performance of revenue backed securities that have been issued in the last five years with maturities greater than one year.

**Investment Style:** Performance of different types of stocks will vary over time. A common way to characterize a stock is by market capitalization (e.g., large cap or small cap) or style (e.g., value or growth).

**Large Cap vs. Small Cap:** Large companies tend to be more established companies and therefore exhibit lower volatility. Over an extended period of time, expected returns of small cap companies are often higher due to the risks associated with smaller, less established companies.

**Value vs. Growth:** Value companies typically trade at discount valuations and may pay a dividend. Growth companies are those that are experiencing greater earnings growth prospects.

**Mega Cap:** The Russell Top 50 Index measures the performance of the top 50 largest companies in the Russell 1000 Index, which represents approximately 40% of the total market capitalization of the Russell 1000 Index.

**Large Cap:** The Russell Top 200 Index measures the performance of the 200 largest companies in the Russell 1000 Index, which represents approximately 68% of the total market capitalization of the Russell 1000 Index.

**Mid Cap:** The Russell Midcap Index measures the performance of the 800 smallest companies in the Russell 1000 Index, which represent approximately 36% of the total market capitalization of the Russell 1000 Index.

**Small Cap:** The Russell 2000 Index measures the performance of the 2,000 smallest companies in the Russell 3000 Index, which represents approximately 8% of the total market capitalization of the Russell 3000 Index.

**Large Cap Growth:** The Russell 1000 Growth Index measures the performance of those Russell 1000 index companies with higher price-to-book ratios and higher forecasted growth values.

**Large Cap Value:** The Russell 1000 Value Index measures the performance of those Russell 1000 companies with lower price-to-book ratios and lower forecasted growth values.

**Mid Cap Growth:** The Russell Midcap Growth Index measures the performance of those Russell Midcap companies with higher price-to-book ratios and higher forecasted growth values.

**Mid Cap Value:** The Russell Midcap Value Index measures the performance of those Russell Midcap companies with lower price-to-book ratios and lower forecasted growth values.

**Small Cap Growth:** The Russell 2000 Growth Index measures the performance of those Russell 2000 Index companies with higher price-to-value ratios and higher forecasted growth values.

**Small Cap Value:** The Russell 2000 Value Index measures the performance of those Russell 2000 Index companies with lower price-to-book ratios and lower forecasted growth values.

---

# Disclaimer Regarding Content

Sanctuary makes no representation as to the accuracy or completeness of information contained herein. The information is based upon data available to the public and is not an offer to sell or solicitation of offers to buy any securities mentioned herein. Any investment discussed may not be suitable for all investors. Investors must make their own decisions based on their specific investment objectives and financial circumstances. Investments are subject to risk, including but not limited to market and interest rate fluctuations. Any performance data represents past performance which is no guarantee of future results. Prices/yields/figures mentioned herein are as of the date noted unless indicated otherwise. All figures subject to market fluctuation and change. Additional information available upon request.

Securities offered through Sanctuary Securities, member FINRA and SIPC.

Advisory services offered through Sanctuary Advisors, LLC, an SEC registered investment advisor.